



NSBE NEWSLETTER



WELCOME BACK!!

If you are a new member then welcome and thank you for joining NSBE. We have a lot in store for our members this semester so stick around and come get informed at our weekly meetings on Wednesdays.

Chapter Dues - \$20

National Dues - \$15 (National Dues are not required to join. They are needed if you would like to attend conferences.)

New President

Introducing Nabitou Cisse! Along with a new E-board we have a new president that has the best interest for our chapter. Give her a nice warm welcome



IN THIS ISSUE

- WELCOME
- UPCOMING AGENDA
- SCHOLARSHIPS
- RESOURCES

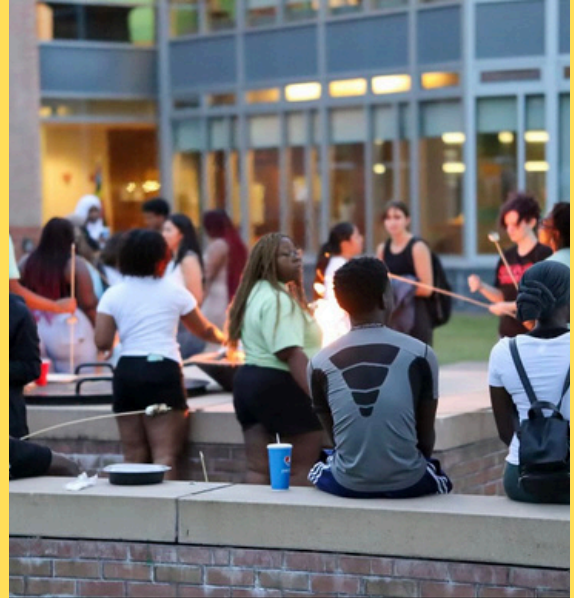




UPCOMING EVENTS

We have taken the time to have both fun and educational activities planned for the semester. Just to name a few for the next month we have;

- Beach Day
- Brookfield Renewable Guest Speaker
- Resume and Elevator Pitch Help



**NSBE AND SHPE
PRESENT**

**BEACH
DAY**

SUNDAY, SEPTEMBER 15
12PM-4PM

Postwood Beach, 2092
River Rd, Potsdam, NY 1367

Free entry, BYO snacks,
water provided. Rides
to beach available.

SCAN QR
CODE TO
REQUEST
RIDE

MORE NOTES

If you would like to apply for scholarships through NSBE then you must be a collegiate member, have a verified GPA and fill out the form below. You can also find this form on the [nsbe.org](https://www.nsbe.org) website.





Dear University Registrar,

Please use the attached form to submit member GPAs for verification. Collegiate members will be able to apply for scholarships only if they have a verified GPA in the system. All members must have a verified GPA to receive APEX registration discounts for Fall Regional Conferences and Annual Convention.

The National Society of Black Engineers (NSBE) serves as a sounding board and resource for minority engineering students around the world, and we are proud that your college chapter is working diligently to offer programs and services to its members to help them excel academically. With more than 35,000 members globally, our mission is “to increase the number of culturally responsible Black engineers who excel academically, succeed professionally, and positively impact the community.” Academic excellence is our first priority.

As National Academic Excellence Chairperson my goal is to understand the academic needs of our students and reward those who are excelling academically. To accomplish this, my team tracks member’s academic progress by collecting verified GPA information on our students.

For Collegiate Members:

1. Self-report your GPA on your profile.
2. Complete GPA collection form, have it signed by the Office of Registrar and e-mail the form to scholarships@nsbe.org.

Please complete the GPA verification form in its entirety. The GPA verification form helps us with verifying members GPAs, and it is important that the information recorded is accurate. All information including first and last name, NSBE ID number, signature, and GPA must be recorded on the form, if the GPA verification form is not completed we cannot verify the members GPA. To accommodate a variety of workflows, we also accept the information through any one of two different submission means:

1. Email to: scholarships@nsbe.org (.pdf recommended for accurate processing)

If you have any questions or concerns about accepted formats, please contact our NSBE Programs team at scholarships@nsbe.org.

Thank you for helping us see our mission realized.

Blythe Dumerer

National Academic Excellence Chair 2024-2025
National Society of Black Engineers (NSBE)
nebaex@nsbe.org

GPA Collection Form: _____

University/ Chapter Name

LAST NAME	FIRST NAME	Signature By signing this form, I agree to have my cumulative GPA released to the National Society of Black Engineers.	NSBE ID	GPA (University Official ONLY) on a 4.0 unweighted scale

Below this line for University Official use only _____

Submitter Name: _____ Submitter Title: _____

By signing this form, I certify that these are confirmed GPA'S for the above students. _____



ACTIVE SCHOLARSHIPS



Arup Scholarship

- \$5000
- All years
- Min GPA: 3.0
- U.S Citizen
- Due: Jan 10th

Majors: Chemical Engineering, Civil Engineering, Electrical Engineering, Environmental Engineering, Computer Engineering, Computer Science, Social/Life Science.

You must complete a short essay describing a local challenge that ignites your passion for engineering solutions and a project you see yourself leading to address it. Resume required.

GE Foundation Scholarship

- \$5000
- All Years
- Min GPA: 3.0
- U.S Citizen
- Due: Jan 10th

All NSBE majors. You must complete a short essay on how you will use your education to advance technology. Two letters of recommendation and a resume are required.

Fulfilling The Legacy Scholarship

- Award Unspecified
- All Years
- Due Jan 10th

Write a short essay on how you will fulfill NSBE's mission statement and talk about your involvement in NSBE.

OTHER RESOURCES

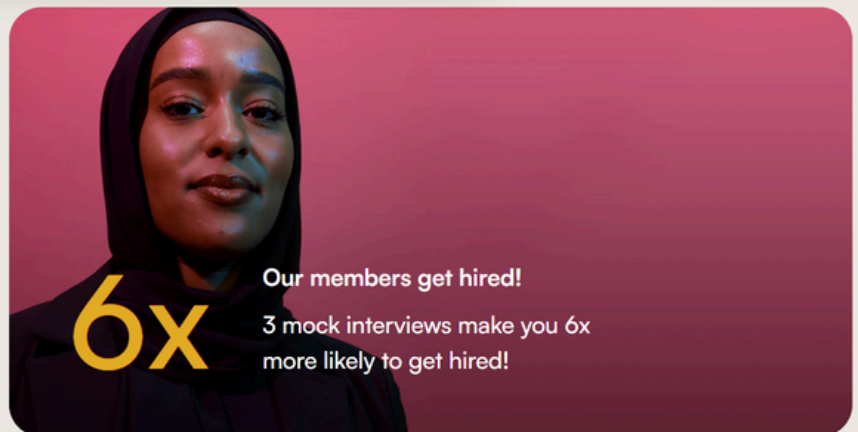


NSBE is partnered with Brilliant Black Minds which is an organization that will help you get further in your comp sci or software career. It is completely free to join and they offer mock interviews, networking opportunities and job opportunities. This is a good resource to have if you are having trouble with your interviews and are unsure how to prepare.

Members | Partners | **Join now**

Why Join?

We help you feel confident to tackle your next technical interview through practice, feedback, and community support.



Mock Interview Prep

Practice algorithmic and systems design questions exactly like the ones you'll solve in real interviews



Expert Feedback & Guidance

Practice with Interview Engineers who hold technical roles at FAANG and other top companies



Learning & Study Resources

Access our Learning Center's self-guided study plans that go hand-in-hand with your personalized interview feedback



Network with Senior Software Engineers

Join interview accelerators and exclusive networking and mentorship programs attended by lead engineers from our hiring partners



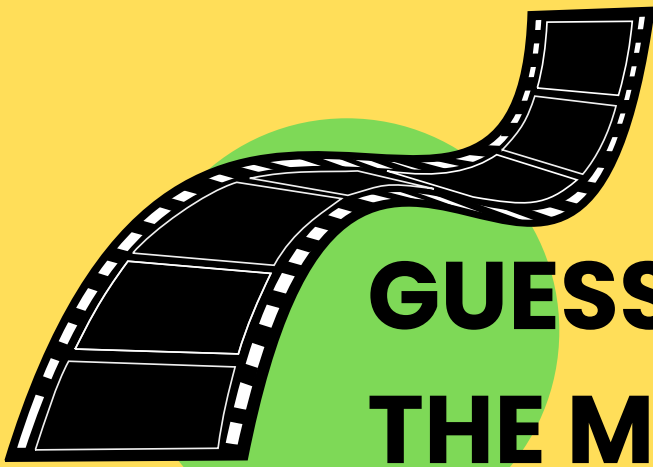
Community Support

Connect in Discord and learn with 9,000+ current and aspiring Black engineers

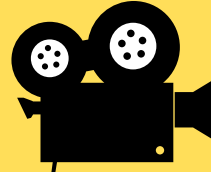


Fast-Track to Your Future

Get matched to open roles with our partners based on your practice performance



GUESS THE MOVIE



Can you guess which movie this quote is from?

- A. Selma
- B. Black Panther
- C. Coming To America

Correct answer at the bottom

"In times of crisis, the wise build bridges while the foolish build barriers."

INSPIRATIONAL QUOTE

"Stop doubting yourself. Work hard and make it happen."



(09)

September 2024

CLARKSON NSBE PROF. DEV.

IG: CU_NSBE WWW.NSBECLARKSON.COM SOCIAL ACTIVITY

SPONSOR GBM

SUNDAY	MONDAY	TUESDAY	WEDNESDAY	THURSDAY	FRIDAY	SATURDAY
01	02	03	04 GBM 👋 Welcome back GBM 🥰	05	06	07
08	09	10	11 Resume/LinkedIn/ Elavator Pitch Woekshop	12	13	14
15 SOCIAL ACTIVITY BEACH DAY w/ SHPE 🏖️	16	17	18 PROF. DEV. CAREER FAIR Brookfield Renewable Info Session ♻️	19 PROF. DEV.	20	21
22	23	24	25 GBM Know Your Resources (Clarkson Edition)	26	27	28
29	30	01 October Food Drive Begins	02	03	04	05 FALL ZONE CONFERENCE 🙌 RIT



Apply for E-Board

- Freshman Rep
- Programs Chair
- Historian

CAREER FAIR: PROFESSIONAL SOCIETIES MIXER

GREAT OPPORTUNITY TO MEET EMPLOYERS
BEFORE THE CAREER FAIR AND PRACTICE
NETWORKING SKILLS.
WE ALL BRING SOMETHING UNIQUE!



Society Of
Professional
Women



WEDNESDAY
18 SEPT 2024

START AT
9:00 AM - 10:30 AM

CHEEL ARENA
CLUB 99
(1ST FLOOR)

RSVP
Here



NSBE Presents

SOFTWARE ENGINEERING BOOTCAMP

Learn Python in 7 weeks!

OCT 19 - DEC 7: SNELL B10L



Instructor: Ola

Assistants: Aniekan, Jason, Suchi

All enrolled participants will be
offered Leetcode Premium!

WHO SHOULD ATTEND:

- Beginners: No experience required, just interest & consistency
- Advanced: Prior experience or completion of Beginners class.

TOPICS COVERED:

- Arrays, Strings, Stacks
- Binary Search, Hash Tables
- Functions, Methods, Classes
- Linked Lists, Backtracking, Graphs

WHAT TO BRING:

- Laptop (Mac or Windows)



Scan the QR
code to sign up!

